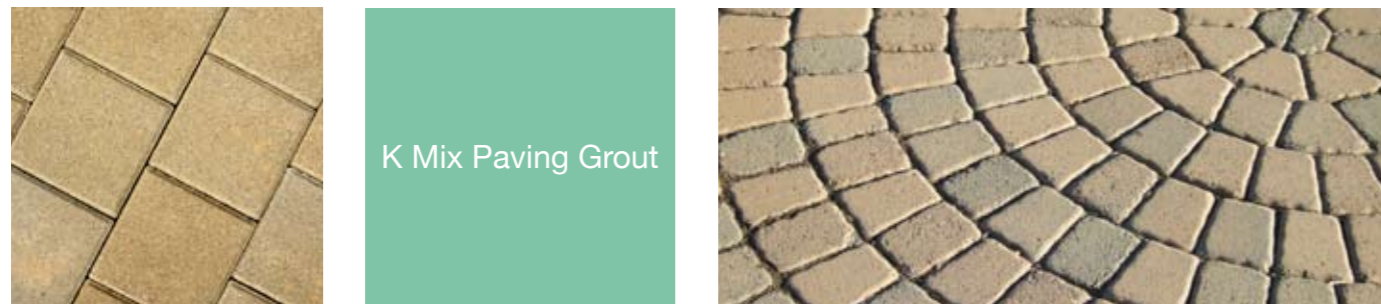
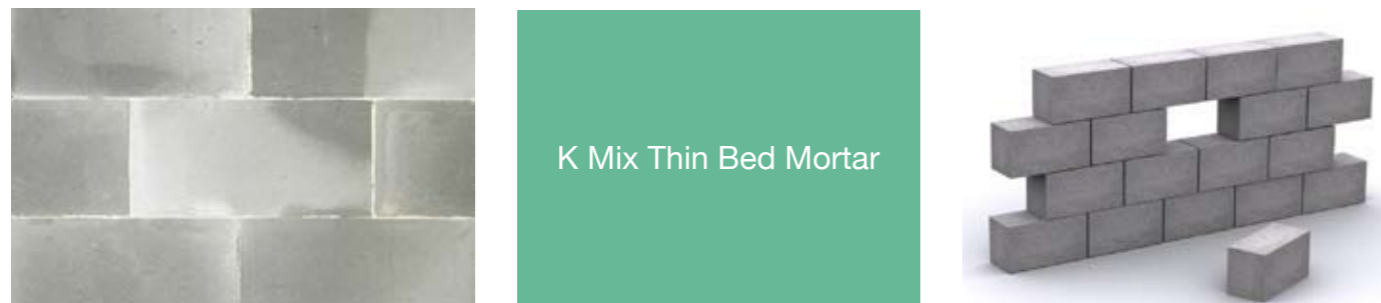


Uniclass L6412	EPIC F312
CI/SfB June 2010	Yq4



**K MIX** Kilwaughter Chemical  
Company Limited  
**Construction Mortars**





**K Mix: a range of dry bagged construction mortars**

The K Mix product range incorporates a variety of dry bagged construction mortars that require only the addition of water and mixing time. The mortars can be used for block and brick laying, scratch coats, bedding for pavia and grout for pavia.

**Quality** 

K Mix is manufactured under ISO 9001 and carries the British Standards Institute Kitemark® licence. The Kitemark® is the world's premier symbol of trust, integrity and quality ensuring that vital product safety and performance requirements are met. BS EN 998:2003 is a British and European Standard entitled 'Specification for Mortar for Masonry'. It is published in two parts; part 1 deals with 'Rendering and Plastering Mortar' and part 2 deals with 'Masonry Mortar'. Achieving a kitemark to BS EN998 part 2 for the majority of the K Mix range is your guarantee that K Mix has satisfied the most rigorous of quality testing processes.

**K Mix and the Environment**

Pride is taken in product innovation, however the impact on the environment is also important. Environmental considerations are an integral part of business practice. Therefore, in manufacturing the K Mix range, care has been taken to ensure from the earliest stages of product design through to manufacturing, modern technologies have been utilised to help to reduce carbon footprint.

**Which K Mix Product Should I Use?**

	Kite-marked	Standard Block	Brick	Scratch coat	Light weight Block	Bedding Pavia	Grout for Pavia	Coloured
<b>K Mix GP Mortar</b>	✓	✓	✓	✓		✓		No
<b>K Mix GP Mortar Coloured</b>	✓	✓	✓			✓		Yes
<b>K Mix Thin Bed Mortar</b>	✓				✓			No
<b>K Mix Paving Grout</b>							✓	Yes

## K Mix GP Mortar



K Mix GP Mortar is a general purpose mortar designed for laying blocks or bricks. It can also be used as a scratch coat plaster for internal and external work, as a bedding for pavia and as a rubbed up finish suitable for external painting.

### Quality Assured Manufacturing Process

BS EN ISO 9001:2000.  
Modern computer controlled plant ensures consistency.

- ▶ Can be hand applied or used with a spray applicator
- ▶ On site add clean water and mix for 5 minutes
- ▶ Workable and easy to use
- ▶ 25kg sacks for convenient on site handling
- ▶ Reduced wastage over bulk materials



m-tec M300 spray machine

## Rendering & Plastering



Hand Applied	Machine Applied	EN 998-1:2003 for Rendering & Plastering
K Mix GP Mortar is designed to be hand applied.	K Mix GP Mortar is designed to be machine applied.	Designed general purpose rendering mortar (GP) for external use.
<b>Coverage:</b> 1.8kg / mm thick /sq m approx. 55 sq m per tonne	<b>Coverage:</b> 1.5kg / mm thick /sq m approx. 66 sq m per tonne	<b>Workable Life:</b> 4hrs 28mins <b>Capillary Water Absorption:</b> W2 <b>Compressive Strength:</b> Category M 5 <b>Adhesion:</b> 0.28 N/mm2 (FP - a) <b>Water Vapour Permeability:</b> $\mu$ 0.17 <b>Dry Bulk Density:</b> 1400 kg/m <sup>3</sup> <b>Thermal Conductivity:</b> ( $\lambda$ 10,dry) P = 50% - 0.43 W/mK (tab. value) ( $\lambda$ 10,dry) P = 90% - 0.49 W/mK (tab. value)
<b>Require:</b> 14-18kg / per sq m approx. 8-10mm thickness	<b>Require:</b> 12-15kg / per sq m approx. 8-10mm thickness	<b>Durability</b> (against freeze-thaw):based on provisions valid in UK & Ireland <b>Air Content:</b> 29% <b>Reaction to fire:</b> Class A1

## Block Laying



Blocks laid on edge	Blocks laid on flat	EN 998-2:2003 for Blocklaying
K Mix GP Mortar is designed to be used for laying blocks.	K Mix GP Mortar is designed to be used for laying blocks.	Designed general purpose masonry mortar for external use in elements subject to structural requirements.
<b>Coverage:</b> 1.8kg / mm thick /sq m 500 blocks approx per tonne	<b>Coverage:</b> 1.8kg / mm thick /sq m 280 blocks approx per tonne	<b>Workable Life:</b> 4hrs 28mins <b>Content of chloride:</b> 0.02% <b>Density:</b> 1400 kg/m <sup>3</sup> <b>Compressive Strength:</b> Category M 5 <b>Initial shear strength:</b> 0,15 N/mm2 (tab. value) <b>Water Absorption:</b> 0.17 kg/(m2.min0.5 ) <b>Water Vapour Permeability:</b> $\mu$ 5/20 <b>Thermal Conductivity:</b> ( $\lambda$ 10,dry) P = 50% - 0.43 W/mK (tab. value) ( $\lambda$ 10,dry) P = 90% - 0.49 W/mK (tab. value)
<b>Require:</b> 14-18kg / per sq m approx. 15-18mm thickness	<b>Require:</b> 60-70kg / per sq m approx. 15-18mm thickness	<b>Durability</b> (against freeze-thaw):based on provisions valid in UK & Ireland <b>Air Content:</b> 29% <b>Reaction to fire:</b> Class A1

## Brick Laying



Brick Size 215 x 102 x 65	Brick Size 215 x 102 x 73	EN 998-2:2003 for Bricklaying
K Mix GP Mortar is designed to be used for laying bricks.	K Mix GP Mortar is designed to be used for laying bricks.	Designed general purpose masonry mortar for external use in elements subject to structural requirements.
<b>Coverage:</b> 1.8kg / mm thick /sq m 1300 bricks per tonne	<b>Coverage:</b> 1.8kg / mm thick /sq m 1200 bricks per tonne	<b>Workable Life:</b> 4hrs 28mins <b>Content of chloride:</b> 0.02% <b>Compressive Strength:</b> Category M 5 <b>Initial shear strength:</b> 0,15 N/mm2 (tab. value) <b>Water Absorption:</b> 0.17 kg/(m2.min0.5 ) <b>Water Vapour Permeability:</b> $\mu$ 5/20 <b>Density:</b> 1400 kg/m <sup>3</sup> <b>Thermal Conductivity:</b> ( $\lambda$ 10,dry) P = 50% - 0.43 W/mK (tab. value) ( $\lambda$ 10,dry) P = 90% - 0.49 W/mK (tab. value)
<b>Require:</b> 40-50kg / per sq m approx. 15-18mm thickness	<b>Require:</b> 40-50kg / per sq m approx. 15-18mm thickness	<b>Durability</b> (against freeze-thaw):based on provisions valid in UK & Ireland <b>Air Content:</b> 29% <b>Reaction to fire:</b> Class A1

## Bedding for Pavia

K Mix GP Mortar is designed to be used to bed pavia.

**Coverage:**  
1.8kg / mm thick /sq m  
20-25 sq m per tonne

**Require:**  
35-55kg / per sq m approx.  
20-30mm thickness

## K Mix GP Mortar Coloured



K Mix GP Mortar Coloured is a coloured general purpose mortar for laying bricks and blocks. The colour range available can be used to match or contrast with most bricks and are suitable for modern and traditional buildings.

- ▶ Workable and easy to use
- ▶ On site add clean water and mix in a standard mixer
- ▶ 25kg sacks for convenient on site handling
- ▶ Reduced wastage over bulk materials
- ▶ Only mix as required or as the weather permits

### Quality Assured Manufacturing Process

BS EN ISO 9001:2000.

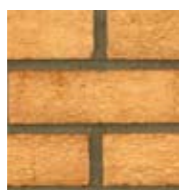
Modern computer controlled plant ensures consistency.

### Colour

- ▶ Samples of K Mix GP Mortar Coloured are provided on request, for colour indication only
- ▶ A site sample is recommended to ensure that the specifier is satisfied with the mortar colour
- ▶ K Mix materials are manufactured from natural products, slight shade variations may occur



Antrim White



Armagh Grey



Belfast Brown



Down Red



Tyrone Pine

All full colour illustrations shown in this brochure are as accurate as the printing process will allow. We recommend colours be verified against K Mix samples before ordering.

### Brick Laying



Brick size: 215 x 102 x 65	Brick size: 215 x 102 x 73
K Mix GP Mortar Coloured is designed to be used for brick laying.	K Mix GP Mortar Coloured is designed to be used for brick laying.
<b>Coverage:</b> 1.8kg / mm thick /sq m 1200 bricks built per tonne	<b>Coverage:</b> 1.8kg / mm thick /sq m 1100 bricks built per tonne
<b>Require:</b> 40-50kg / per sq m approx. 15-18mm thickness	<b>Require:</b> 40-50kg / per sq m approx. 15-18mm thickness

### Block Laying



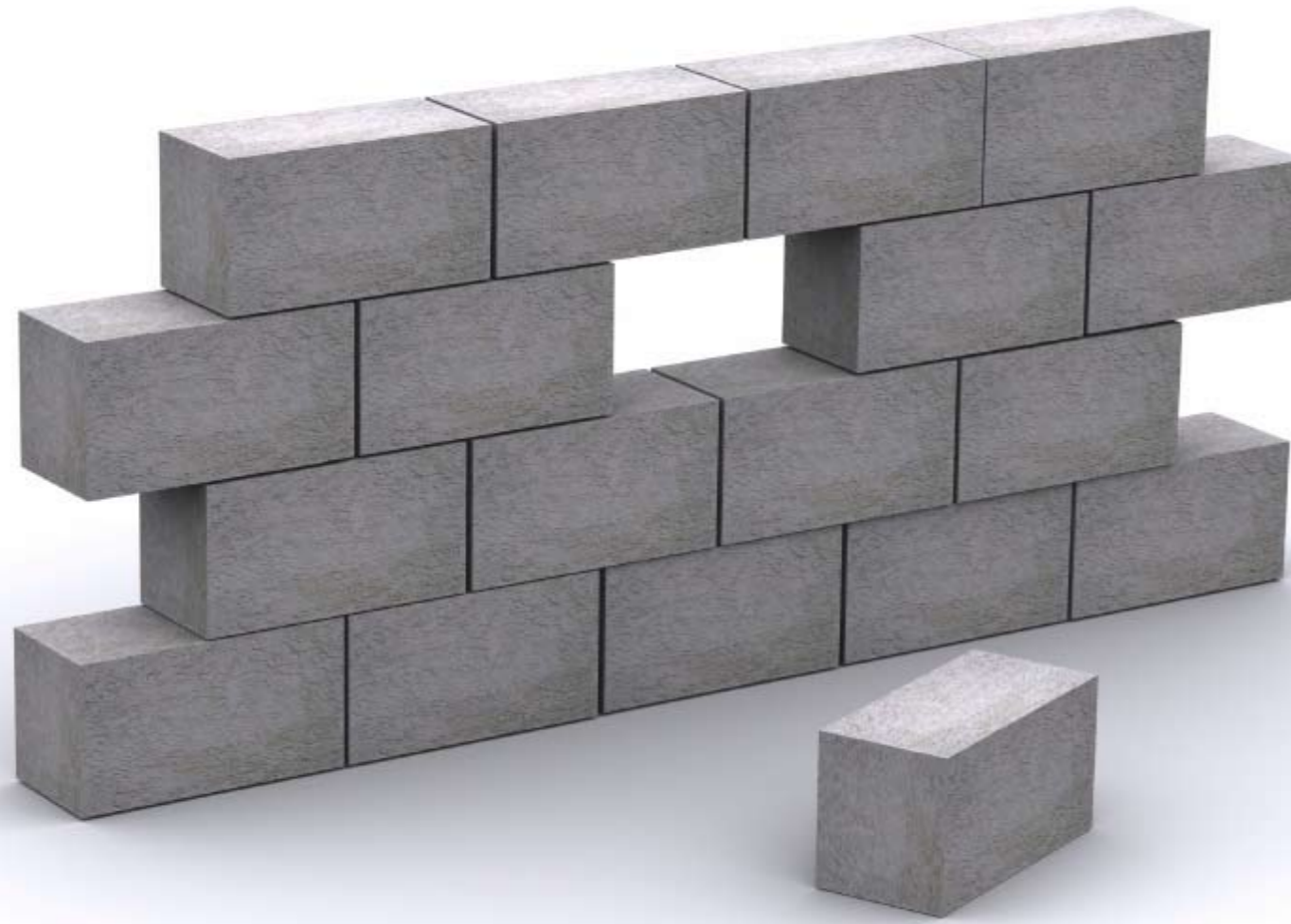
Blocks Laid on Edge	Blocks Laid on Flat
K Mix GP Mortar Coloured is designed to be used for laying blocks.	K Mix GP Mortar Coloured is designed to be used for laying blocks.
<b>Coverage:</b> 1.8kg / mm thick /sq m 500 blocks per tonne	<b>Coverage:</b> 1.8kg / mm thick /sq m 280 blocks per tonne
<b>Require:</b> 14-18kg / per sq m approx. 15-18mm thickness	<b>Require:</b> 60-70kg / per sq m approx. 15-18mm thickness

### EN 998-2:2003 for Brick Laying & Block Laying

Designed general purpose masonry mortar for external use in elements subject to structural requirements.

<b>Workable Life:</b>	4hrs 28mins
<b>Content of chloride:</b>	0.02%
<b>Compressive Strength:</b>	Category M 5
<b>Initial shear strength:</b>	0,15 N/mm <sup>2</sup> (tab. value)
<b>Water Absorption:</b>	0.17 kg/(m <sup>2</sup> .min0.5)
<b>Water Vapour Permeability:</b>	μ5/20
<b>Durability</b> (against freeze-thaw):	based on provisions valid in UK & Ireland
<b>Thermal Conductivity:</b>	(λ 10,dry) P = 50% - 0.43 W/mK (tab. value) (λ 10,dry) P = 90% - 0.49 W/mK (tab. value)
<b>Reaction to fire:</b>	Class A1
<b>Air Content:</b>	29%
<b>Density:</b>	1400 kg/m <sup>3</sup>

## K Mix Thin Bed Mortar



K Mix Thin Bed Mortar is designed for aircrete block and other fast track building systems. It is factory produced to provide excellent consistency and colour uniformity.

- ▶ Add water and mix for 5 minutes
- ▶ Easy to use. Ideal for fast builds.
- ▶ K Mix Thin Bed Mortars are manufactured to ISO 9001, ensuring highest quality standards
- ▶ 25kg sacks for convenient on site handling
- ▶ Reduced wastage over bulk materials

### Quality Assured Manufacturing Process

BS EN ISO 9001:2000.  
Modern computer controlled plant ensures consistency.

## K Mix Thin Bed Mortar

Block Size: 610 x 215 x 100	Block Size: 610 x 100 x 215	Block Size: 440 x 215 x 100	Block Size: 440 x 100 x 215
K Mix Thin Bed Mortar is designed for aircrete block and other fast track building systems.	K Mix Thin Bed Mortar is designed for aircrete block and other fast track building systems.	K Mix Thin Bed Mortar is designed for aircrete block and other fast track building systems.	K Mix Thin Bed Mortar is designed for aircrete block and other fast track building systems.
<b>Coverage:</b> Blocks laid on edge 1.45kg / mm thick / sq m	<b>Coverage:</b> Blocks laid on flat 1.45kg / mm thick / sq m	<b>Coverage:</b> Blocks laid on edge 1.45kg / mm thick / sq m	<b>Coverage:</b> Blocks laid on flat 1.45kg / mm thick / sq m
Approx blocks built per tonne: 2000	Approx blocks built per tonne: 4000	Approx blocks built per tonne: 2500	Approx blocks built per tonne: 5000
<b>Require:</b> 2mm joint thickness	<b>Require:</b> 2mm joint thickness	<b>Require:</b> 2mm joint thickness	<b>Require:</b> 2mm joint thickness

### EN 998-2:2003 for Blocklaying

Designed thin layer masonry mortar for external use in elements subject to structural requirements.

<b>Workable Life:</b>	2hrs 40mins
<b>Water Vapour Permeability:</b>	$\mu$ 5/20
<b>Correction time:</b>	8 minutes
<b>Content of chloride:</b>	0.02%
<b>Density:</b>	1450 kg/m <sup>3</sup>
<b>Air Content:</b>	21%
<b>Water Absorption:</b>	0.23 kg/(m <sup>2</sup> .min0.5)
<b>Thermal Conductivity:</b>	( $\lambda$ 10,dry) P = 50% - 0.45 W/mK (tab. value) ( $\lambda$ 10,dry) P = 90% - 0.52 W/mK (tab. value)
<b>Compressive Strength:</b>	Category M 5
<b>Initial shear strength:</b>	0,3 N/mm <sup>2</sup> (tab. value)
<b>Maximum grain size:</b>	1 mm
<b>Reaction to fire:</b>	Class A1
<b>Durability</b> (against freeze-thaw):	based on provisions valid in UK & Ireland



## K Mix Rapid Set Paving Grout



K Mix Paving Grout is a rapid setting product designed for use as grouting in paving applications, requiring only the addition of water and 5 minutes mixing time.

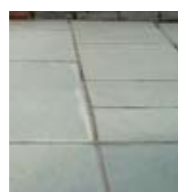
- ▶ Add water and mix for 5 minutes
- ▶ Rapid setting properties. Finished job within hours
- ▶ Manufactured to ISO 9001, ensuring highest quality standards
- ▶ Available in Savannah, Steel and Slate
- ▶ 25kg sacks for convenient on site handling

### Quality Assured Manufacturing Process

BS EN ISO 9001:2000.  
Modern computer controlled plant ensures consistency.



Savannah



Steel



Slate

All full colour illustrations shown in this brochure are as accurate as the printing process will allow. We recommend colours be verified against K Mix samples before ordering.

## K Mix Rapid Set Paving Grout

K Mix Paving Grout is designed for use as a grout when laying paving.

### Coverage:

Coverage guides will vary depending on the size of paving and joints used. For advice please contact our Technical Support Team on:

UK Tel: 028 2826 0766  
ROI Tel: 021 4872 733

### Require:

Typically a 25kg bag / 70 linear m / joint 10mm wide and 20mm deep

**Compressive Strength:** Category M5

**Density:** 1400 kg/m<sup>3</sup>

**Setting Time:** approx. 15 mins @ 20°C

**Content of chloride:** 0.02%

**Reaction to fire:** Class A1

### K RANGE

Also available from the K Range are:

- K Rend (Coloured Renders)
- K Lime
- K Post
- K Rend Tyrolean
- K Rend Traditional White Mortar

Complementary Products:

- K Bead (PVC)
- Tools
- Alkali Resistant Reinforcing Mesh
- R7 Liquid Acrylic
- m-tec M300 Spray Machine





[www.K-REND.co.uk](http://www.K-REND.co.uk)



Certificate No.  
FM85394



BSEN998-1 & BSEN998-2  
Licence No. 514639



Reducing emissions  
by 10% in 2010



Certificate No: 06/0248



## Kilwaughter Chemical Co Ltd

For UK Sales  
9 Starbog Rd, Larne, N. Ireland, BT40 2TJ  
Tel: 028 2826 0766 Fax: 028 2826 0136  
Email: Sales@Kilwaughter.com  
[www.K-Rend.co.uk](http://www.K-Rend.co.uk)

## Irish Aggregates Ltd

For ROI Sales  
Classis, Ovens, Co. Cork, Ireland  
Tel: 021 4872733 Fax: 021 4871705  
Email: info@IrishAggregates.ie  
[www.IrishAggregates.com](http://www.IrishAggregates.com)